

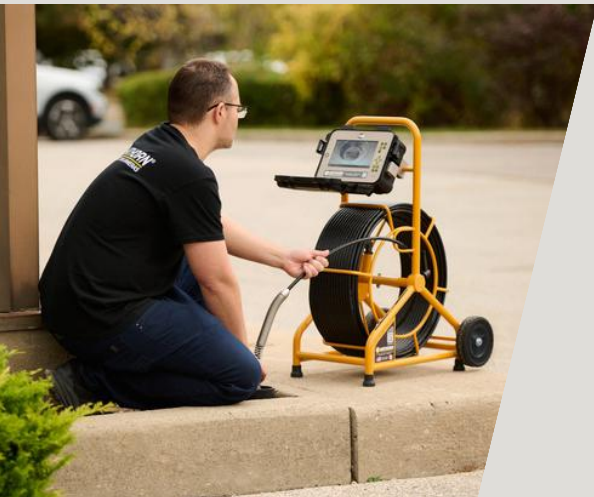
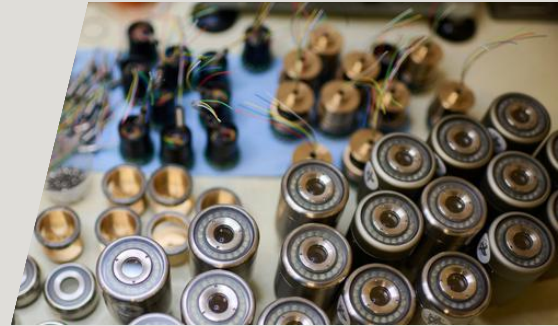


HATHORN

INSPECTION CAMERAS



2024 CATALOG



1 (866) 428-4676



HATHORNCORP.COM

**Proudly Manufactured
in North America**

***LEGENDARY DURABILITY.
MADE IN NORTH AMERICA.***



TABLE OF CONTENTS

| | |
|--------------|---|
| PAGE 1 - 14 | <i>CAMERA SYSTEMS</i> |
| PAGE 15 - 16 | <i>LOCATORS & TRANSMITTERS</i> |
| PAGE 17 | <i>PATCH CABLES</i> |
| PAGE 18 | <i>ACCESSORIES</i> |
| PAGE 19 - 20 | <i>CAMERA HEAD SKIDS</i> |
| PAGE 21 - 22 | <i>CAMERA HEADS</i> |
| PAGE 23 | <i>REPAIR CENTRES</i> |

Since 2003, Hathorn® has manufactured the toughest pipe and sewer inspection cameras on the market. Proudly designed and manufactured in North America. From California to Canada; Alaska to Australia; Hathorn cameras can tackle any climate and any job.

Our business is building inspection cameras for your business. Call us to find out how we can help your business grow through unmatched reliability, parts availability and product customization.

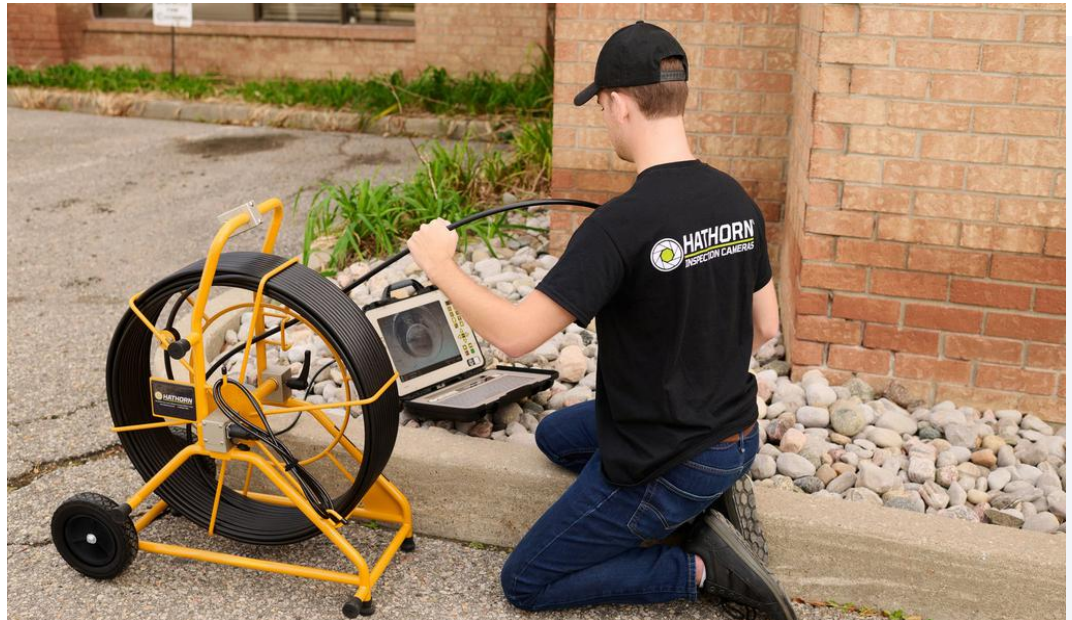
HATHORN H12+

CONTROL MODULE



Get A Quote

PROUDLY DESIGNED AND MANUFACTURED IN NORTH AMERICA



Light Weight
9.5 lbs/4.5 kg



Screen Shot
Function



Internal Hard
Drive 128GB
or 512GB



Works with 18V
Milwaukee® or
Equivalent
Batteries



Full Size
Keyboard



Daylight
Readable
Display



Record to
USB & HDD



Hathorn
Info Bar



Camera LED
Light Control



Industry-
Leading
Warranty

The Hathorn® H12+ is in a class of its own with the brightest daylight-readable 12" LCD screen in the industry. It has almost three times the brightness of the leading brand providing stunning picture quality, high contrast and 8X digital "pan & zoom" technology revealing details missed by other pipe inspection cameras.

Available with Wi-Fi as an option, the H12+ has menus in three languages (English, French and Spanish), compatibility with all Hathorn reels past, present and future from 100-500ft., unique on-screen job information bar and text overlay features, two sonde frequencies (512Hz & 640Hz) and industry-leading on-board file storage.

The H12+ comes standard with a 128Gb hard drive which is upgradeable to 512Gb allowing the user to save MPEG videos and JPEG screen shots to either the HDD or to a USB stick. This offers the user over 100 hours of recording capability or over 400 hours with the upgraded 512Gb HDD.

Powered by 18V Milwaukee® (or equivalent) batteries, the H12+ will run up to 4 hours on a single charge. Batteries sold separately.

HATHORN H12+

CONTROL MODULE

PROUDLY DESIGNED AND MANUFACTURED IN NORTH AMERICA



Specifications

Display

| | |
|-------------------------|---|
| Size & Type | 12" (30.7cm) impact-resistant LCD |
| Resolution & Brightness | XGA 1024 x 768 pixels with 1,300 cd/m2 |
| Zoom | 1X, 2X, 4X, 8X with digital pan feature |

Recording, Storage & Features

| | |
|---------------------|--|
| Recording Options | MPEG4 video (H.264 at 30 fps) & JPEG screenshot |
| Storage Options | USB, HDD or USB & HDD |
| USB Capacity | USB 2.0 up to 32Gb |
| Hard Drive Capacity | 128Gb (standard) or 512Gb (upgrade) |
| Keyboard | Full-sized QWERTY with silicone cover |
| Camera Head LED | Dimming control 5% increments |
| Hathorn Info Bar | 74 characters over 2 lines with time/date |
| Text Overlay | 8 Pages - save, recall, hide, delete |
| Menu Languages | English, Spanish, French |
| Audio | Integrated microphone and speaker |
| Footage Counter | Feet or meters with reset function |
| Sonde Frequencies | High power 512Hz or 640Hz |
| Reel Compatibility | All Hathorn reels (except Wi-Fi) |

Power

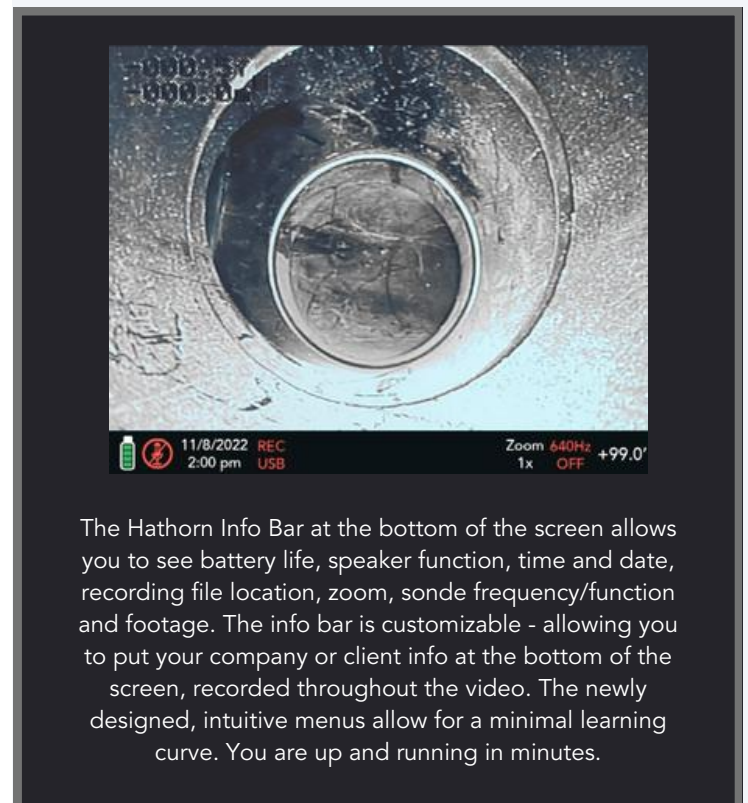
| | |
|---------------------|--------------------------------------|
| Battery (not incl.) | Only Milwaukee®M18 18V or equivalent |
| Battery Life | ~4Hrs. using 3.0Ah |
| Battery Extender | Auto dimming & auto saving |
| AC/DC Adapter | 12V - 4.1A (included) |

Weight & Dimensions

| | |
|------------------------|---------------------------------------|
| Weight without Battery | 9.5lb (4.3Kg) |
| Dimensions (L x W x H) | 15" x 12" x 5.5" (38cm x 30cm x 14cm) |

Environmental

| | |
|-----------------------|-------------------------------|
| Water Resistance | IP65 |
| Operating Temperature | 14°F to 122°F (-10°C to 50°C) |
| Storage Temperature | -4°F to 140°F (-20°C to 60°C) |



The Hathorn Info Bar at the bottom of the screen allows you to see battery life, speaker function, time and date, recording file location, zoom, sonde frequency/function and footage. The info bar is customizable - allowing you to put your company or client info at the bottom of the screen, recorded throughout the video. The newly designed, intuitive menus allow for a minimal learning curve. You are up and running in minutes.

HATHORN CAMERA REELS

STANDARD



Get A Quote

PROUDLY DESIGNED AND MANUFACTURED IN NORTH AMERICA



For use with
Hathorn
Command
Modules



Self-Levelling
Camera Heads



200 ft to 500
ft of Push Rod



512Hz or
640Hz High
Power Sonde



Industry-Leading
Warranty

Hathorn® camera reels are designed to work with any Hathorn control module, past present or future. These rugged and durable camera reels come fitted with your choice of Hathorn self-levelling camera heads, all equipped with super-bright, cool running LEDs for optimal picture quality. Butt-welded steel frame construction, stainless steel camera heads and your choice of cable size allow you to push further than ever before and remain in the field longer with Hathorn's legendary reliability.

Hathorn camera reels are trusted by plumbers, municipalities, general contractors, home inspectors, petrochemical companies, and mining engineers to deliver a clear, recordable video inspection every time the camera is used. Designed and manufactured in North America, with a full one-year warranty.

HATHORN CAMERA REELS

STANDARD

PROUDLY DESIGNED AND MANUFACTURED IN NORTH AMERICA



Specifications

Display

Size & Type Compatible with all Hathorn control modules. H12+ recommended for best picture and options

Features

Sonde Frequency High power 512Hz or 640Hz (available only with H12+ controller)

Push Rod HDPE push rod with coax core - multiple lengths and thicknesses

Weight & Dimensions

Weight See specific item in list to the right

Dimensions (L x W x H) See specific item in list to the right

Environmental

Water Resistance - Camera & Rod IP67 to 60psi

Water Resistance - Battery Cradle IP65

Water Resistance - Reel Hub IP64

Operating Temperature 14°F to 122°F (-10°C to 50°C)

Storage Temperature -4°F to 140°F (-20°C to 60°C)

| Extra Large | | | | | | | | |
|-------------|-------------|----------------|------------|----------|----------------|--------|----------|-----------------|
| Catalog # | Camera Head | Self Levelling | Rod Length | Rod Size | Min. 90° Elbow | Weight | Max Pipe | Dimensions |
| XLR-5568-SL | 1.68" | ✓ | 500 ft. | 5/8" | 3" | 90lbs. | 12" | 33" x 29" x 16" |
| XLR-5168-SL | 1.68" | ✓ | 500 ft. | 1/2" | 3" | 75lbs. | 12" | 33" x 29" x 16" |

| Large | | | | | | | | |
|------------|-------------|----------------|------------|----------|----------------|---------|----------|-----------------|
| Catalog # | Camera Head | Self Levelling | Rod Length | Rod Size | Min. 90° Elbow | Weight | Max Pipe | Dimensions |
| LR-3168-SL | 1.68" | ✓ | 300 ft. | 1/2" | 3" | 55 lbs. | 12" | 33" x 29" x 16" |
| LR-2168-SL | 1.68" | ✓ | 200 ft. | 1/2" | 3" | 45 lbs. | 12" | 33" x 29" x 16" |
| LR-4143-SL | 1.43" | ✓ | 400 ft. | 1/2" | 3" | 65 lbs. | 10" | 33" x 29" x 16" |
| LR-3143-SL | 1.43" | ✓ | 300 ft. | 1/2" | 3" | 55 lbs. | 10" | 33" x 29" x 16" |
| LR-2143-SL | 1.43" | ✓ | 200 ft. | 1/2" | 3" | 45 lbs. | 10" | 33" x 29" x 16" |

| Mid | | | | | | | | |
|------------|-------------|----------------|------------|----------|----------------|---------|----------|-----------------|
| Catalog # | Camera Head | Self Levelling | Rod Length | Rod Size | Min. 90° Elbow | Weight | Max Pipe | Dimensions |
| MR-2168-SL | 1.68" | ✓ | 200 ft. | 1/2" | 3" | 42 lbs. | 12" | 29" x 18" x 15" |
| MR-2143-SL | 1.43" | ✓ | 200 ft. | 1/2" | 3" | 42 lbs. | 10" | 29" x 18" x 15" |
| MR-2123-SL | 1.23" | ✓ | 200 ft. | .400" | 2" | 42 lbs. | 6" | 29" x 18" x 15" |

| Mini | | | | | | | | |
|------------|-------------|----------------|------------|----------|----------------|---------|----------|-----------------|
| Catalog # | Camera Head | Self Levelling | Rod Length | Rod Size | Min. 90° Elbow | Weight | Max Pipe | Dimensions |
| MN-2123-SL | 1.23" | ✗ | 200 ft. | 1/2" | 2" | 33 lbs. | 6" | 24" x 18" x 10" |
| MN-2100 | 1.23" | ✗ | 200 ft. | 3/8" | 1.5" | 33 lbs. | 4" | 24" x 18" x 10" |

*Straight View Cameras Available



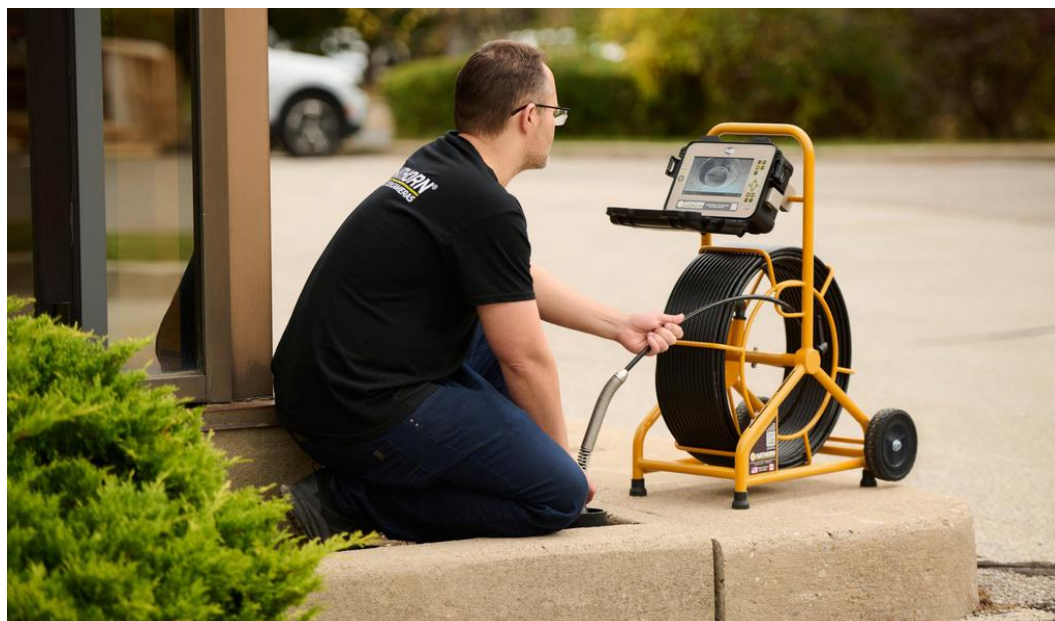
HATHORN H7

CAMERA SYSTEM



Get A Quote

PROUDLY DESIGNED AND MANUFACTURED IN NORTH AMERICA



Screen Shot
Function



Daylight
Readable Display



Internal Hard
Drive - 128Gb
or 512Gb



Self-Levelling
Camera Heads



Record to
USB & HDD



512Hz High
Power Sonde



200 ft of
Push Rod



Industry-Leading
Warranty



Works with 18V
Milwaukee® or
Equivalent Batteries

Hathorn® H7 systems come standard with a 7" daylight readable shatter resistant LCD monitor with 1,000 cd/m2 of brightness, making it the brightest monitor in its class.

Available with Wi-Fi as an option, the H7 has an on-board hard drive with 64Gb (upgradable to 128Gb) capacity and USB recording allowing the user to record MPEG4 video and JPEG screen shots.

The H7 is a complete system with your choice of rugged Hathorn camera heads and three different stiffnesses of push rod. These systems are compatible with 18V Milwaukee® (or equivalent) batteries for ultimate portability and over 5 hours of runtime on a single charge.

Portability is never an issue with the H7 as these lightweight units are only 45lbs. All H7s feature a footage counter, a 512Hz sonde and come equipped with 200ft. of premium cable and your choice of camera head.

These rugged systems are genuinely North American made with a butt-welded steel frame construction and feature military-grade faceplates and connectors.

HATHORN H7

CAMERA SYSTEM

PROUDLY DESIGNED AND MANUFACTURED IN NORTH AMERICA

Specifications

Display

| | |
|-------------------------|---|
| Size & Type | 7" (17.8cm) impact-resistant, daylight-readable LCD |
| Resolution & Brightness | 1024 x 600 pixels with 1,000 cd/m ² |

Recording, Storage & Features

| | |
|---------------------|---|
| Recording Options | MPEG4 video (H.264 at 30 fps) & JPEG screenshot |
| Storage Options | USB, HDD or USB & HDD |
| USB Capacity | USB 2.0 up to 32Gb |
| Hard Drive Capacity | 64Gb (standard) or 128Gb (upgrade) |
| Menu Languages | English, Spanish, French |
| Footage Counter | Feet or meters - resettable |
| Sonde Frequencies | High power 512Hz |
| Push Rod | 200 ft. of HDPE push rod with coax core |

Power

| | |
|---------------------|---------------------------------------|
| Battery (not incl.) | Only Milwaukee® M18 18V or equivalent |
| Battery Life | ~5Hrs. using 3.0Ah |
| Battery Extender | Auto dimming & auto saving |
| AC/DC Adapter | 12V - 4.1A (included) |

Weight & Dimensions

| | |
|------------------------|--|
| Weight without Battery | 45lb (20.4Kg) |
| Dimensions (L x W x H) | 19" x 15.5" x 29.5" (48cm x 39cm x 75cm) |

Environmental

| | |
|-----------------------|-------------------------------|
| Water Resistance | IP65 |
| Operating Temperature | 14°F to 122°F (-10°C to 50°C) |
| Storage Temperature | -4°F to 140°F (-20°C to 60°C) |



| Catalog # | Camera Head | Self Levelling | Rod Length | Rod Size | Min. 90° Elbow | Max Pipe Well Lit |
|------------|-------------|----------------|------------|----------------|----------------|-------------------|
| H7-2168-SL | 1.68" | ✓ | 200 ft. | 1/2" | 3" | 12" |
| H7-2143-SL | 1.43" | ✓ | 200 ft. | 1/2" | 3" | 10" |
| H7-2123-SL | 1.23" | ✓ | 200 ft. | 0.400" or 3/8" | 2" | 6" |
| H7-2100 | 1" | ✗ | 200 ft. | 3/8" | 1.5" | 4" |

*Straight View Cameras Available



HATHORN H5

CAMERA SYSTEM



Get A Quote

PROUDLY DESIGNED AND MANUFACTURED IN NORTH AMERICA

**DESIGNED
SPECIALLY FOR
THE TOOL RENTAL
INDUSTRY**



Screen Shot
Function



Daylight
Readable Display



200 ft of
Push Rod



Self-Levelling
Camera Heads



Record to
USB



512Hz High
Power Sonde



Works with 18V
Milwaukee® or
Equivalent
Batteries



Industry-Leading
Warranty

The Hathorn® H5 has been specially designed for the rental industry with ruggedness and simplicity in mind. The H5 comes with a metal-guarded 5.5" daylight readable shatter resistant LCD monitor with 1,000 cd/m² of brightness, making it the brightest monitor in the rental industry. It offers USB video recording with a screen shot feature allowing the user to record MPEG4 video and JPEGs to a portable USB drive.

The H5 is a complete system with your choice of rugged Hathorn camera heads and three different stiffnesses of push rod. These systems are compatible with 18V Milwaukee® (or equivalent) batteries for ultimate portability and over 5 hours of runtime on a single charge. Portability is never an issue with the H5 as these lightweight units are only 45lbs.

All H5s feature a footage counter and a 512Hz sonde. All Hathorn products are North American made with butt-welded steel frame construction and feature military-grade faceplates and connectors.

Hathorn products have been trusted by rental centers across the country for over a decade to deliver strong return on investment and unmatched durability.

HATHORN H5

CAMERA SYSTEM

PROUDLY DESIGNED AND MANUFACTURED IN NORTH AMERICA

Specifications

Display

| | |
|-------------------------|---|
| Size & Type | 7" (17.8cm) impact-resistant, daylight-readable LCD |
| Resolution & Brightness | 1024 x 600 pixels with 1,000 cd/m2 |

Recording, Storage & Features

| | |
|---------------------|---|
| Recording Options | MPEG4 video (H.264 at 30 fps) & JPEG screenshot |
| Storage Options | USB |
| USB Capacity | USB 2.0 up to 32Gb |
| Hard Drive Capacity | 64Gb (standard) or 128Gb (upgrade) |
| Menu Languages | English, Spanish, French |
| Footage Counter | Feet or meters - resettable |
| Sonde Frequencies | High power 512Hz |
| Push Rod | 200 ft. of HDPE push rod with coax core |

Power

| | |
|---------------------|---------------------------------------|
| Battery (not incl.) | Only Milwaukee® M18 18V or equivalent |
| Battery Life | ~5Hrs. using 3.0Ah |
| Battery Extender | Auto dimming & auto saving |
| AC/DC Adapter | 12V - 4.1A (included) |

Weight & Dimensions

| | |
|------------------------|--|
| Weight without Battery | 45lb (20.4Kg) |
| Dimensions (L x W x H) | 19" x 15.5" x 29.5" (48cm x 39cm x 75cm) |

Environmental

| | |
|-----------------------|-------------------------------|
| Water Resistance | IP65 |
| Operating Temperature | 14°F to 122°F (-10°C to 50°C) |
| Storage Temperature | -4°F to 140°F (-20°C to 60°C) |



| Catalog # | Camera Head | Self Levelling | Rod Length | Rod Size | Min. 90° Elbow | Max Pipe Well Lit |
|------------|-------------|----------------|------------|----------------|----------------|-------------------|
| H5-2168-SL | 1.68" | ✓ | 200 ft. | 1/2" | 3" | 12" |
| H5-2143-SL | 1.43" | ✓ | 200 ft. | 1/2" | 3" | 10" |
| H5-2123-SL | 1.23" | ✓ | 200 ft. | 0.400" or 3/8" | 2" | 6" |
| H5-2100 | 1" | ✗ | 200 ft. | 3/8" | 1.5" | 4" |

*Straight View Cameras Available

HATHORN H2

CAMERA SYSTEM



Get A Quote

PROUDLY DESIGNED AND MANUFACTURED IN NORTH AMERICA



Self-Levelling
Camera Heads



Works with 18V
Milwaukee® or
Equivalent
Batteries



200 ft of
Push Rod



512Hz High
Power Sonde



Industry-Leading
Warranty

The Hathorn® H2 comes with a 7" shatter-resistant LCD monitor, 200 ft. of premium push rod and your choice of straight-view or self-leveling camera heads, all with cool running, super-bright LED lights. The H2 also includes an on-screen footage counter in feet and meters, as well as a 512Hz high power sonde control.

Being aimed at the budget conscious user who wants a robust, easy-to-use system, without paying for extra options, the H2 camera system does not have a recording option. The H2 is an entry level inspection camera offering the same rugged quality and portability of our more expensive models. All Hathorn products are compatible with 18V Milwaukee® batteries offering the H2 over 6 hours of runtime on a single charge.

Trusted by plumbers and contractors to deliver rugged dependability and portability. Designed and manufactured in North America, with a full one-year warranty.

HATHORN H2

CAMERA SYSTEM

PROUDLY DESIGNED AND MANUFACTURED IN NORTH AMERICA

Specifications

Display

| | |
|-------------------------|------------------------------------|
| Size & Type | 7" (17.8cm) impact-resistant LCD |
| Resolution & Brightness | 1024 x 600 pixels with 1,000 cd/m2 |

Recording, Storage & Features

| | |
|-------------------|---|
| Footage Counter | Feet or meters - resettable |
| Sonde Frequencies | High power 512Hz |
| Push Rod | 200 ft. of HDPE push rod with coax core |

Power

| | |
|---------------------|---------------------------------------|
| Battery (not incl.) | Only Milwaukee® M18 18V or equivalent |
| Battery Life | ~6Hrs. using 3.0Ah |
| AC/DC Adapter | 12V - 4.1A (included) |

Weight & Dimensions

| | |
|------------------------|--|
| Weight without Battery | 45lb (20.4Kg) |
| Dimensions (L x W x H) | 19" x 15.5" x 29.5" (48cm x 39cm x 75cm) |

Environmental

| | |
|-----------------------|-------------------------------|
| Water Resistance | IP65 when the lid is closed |
| Operating Temperature | 14°F to 122°F (-10°C to 50°C) |
| Storage Temperature | -4°F to 140°F (-20°C to 60°C) |



| Catalog # | Camera Head | Self Levelling | Rod Length | Rod Size | Min. 90° Elbow | Max Pipe Well Lit |
|------------|-------------|----------------|------------|----------|----------------|-------------------|
| H2-2168-SL | 1.68" | ✓ | 200 ft | 1/2" | 3" | 12" |
| H2-2143-SL | 1.43" | ✓ | 200 ft | 1/2" | 3" | 10" |
| H2-2123-SL | 1.23" | ✓ | 200 ft | 0.400" | 2" | 6" |
| H2-2100 | 1" | ✗ | 200 ft | 3/8" | 1.5" | 4" |



HATHORN CAMERA REELS

WI-FI



Get A Quote

PROUDLY DESIGNED AND MANUFACTURED IN NORTH AMERICA



Screen Shot
Function



Wi-Fi Reel for
use with Phone
or Tablet



Stream &
Record to
Mobile Device



Works with 18V
Milwaukee® or
Equivalent
Batteries



200 ft to
400 ft of
Push Rod



512Hz High
Power Sonde



Over 12 hrs of
Runtime on a
Single Charge



Self-Levelling
Camera Heads



Industry-Leading
Warranty

Hathorn® Wi-Fi camera reels offer the convenience of streaming video inspections directly to two Apple or Android mobile devices at the same time using our free Hathorn app. Allows the user to take screen shots, record videos and make voice commentary. Save videos to your phone, email to your clients or attach to your route management software seamlessly.

All Hathorn cameras are portable and can be powered by external 18V Milwaukee® or equivalent batteries (not included) offering over 12 hours of run time on a single 3.0Ah battery. Batteries are inserted into the near indestructible Hathorn hub. No wires, no external battery cradles, just solid North American engineering.

All Wi-Fi reels feature a footage counter and a 512Hz sonde. Like all Hathorn products, they are genuinely North American made with a butt-welded steel frame construction and made with industry-leading HDPE premium cables.

HATHORN CAMERA REELS

WI-FI

PROUDLY DESIGNED AND MANUFACTURED IN NORTH AMERICA



Specifications

Display

Size & Type Dependent upon Apple/Android Device

Recording, Storage & Features

| | |
|-------------------|--|
| Recording Options | MPEG4 |
| Screen Shot | JPEG |
| File Storage | Mobile Device, cloud or USB |
| Footage Counter | Feet or meters - resettable |
| Sonde Frequency | 512Hz |
| Push Rod | HDPE - 200 ft to 400 ft / 3/8" to 5/8" |
| Start Up Time | ~ 15 seconds |

Power

| | |
|---------------------|--------------------------------------|
| Battery (not incl.) | Only Milwaukee®M18 18V or equivalent |
| Battery Life | ~ 12Hrs. using 3.0Ah |
| AC/DC Adapter | 12V - 4.1A (included) |

Environmental

| | |
|---------------------------------|-------------------------------|
| Water Resistance - Camera & Rod | IP68 to 60psi |
| Water Resistance - Reel Hub | IP65 |
| Operating Temperature | 14°F to 122°F (-10°C to 50°C) |
| Storage Temperature | -4°F to 140°F (-20°C to 60°C) |
| Wi-Fi Frequency | IEEE802.11b/g/n |



| Large | Catalog # | Camera Head | Self Levelling | Rod Length | Rod Size | Min. 90° Elbow | Weight | Max Pipe | Dimensions |
|-------|-------------|-------------|----------------|------------|----------|----------------|---------|----------|-----------------|
| | WLR-4168-SL | 1.68" | ✓ | 400 ft. | 1/2" | 3" | 65 lbs. | 12" | 33" x 29" x 16" |
| | WLR-3168-SL | 1.68" | ✓ | 300 ft. | 1/2" | 3" | 55 lbs. | 12" | 33" x 29" x 16" |
| | WLR-2168-SL | 1.68" | ✓ | 200 ft. | 1/2" | 3" | 45 lbs. | 12" | 33" x 29" x 16" |
| | WLR-4143-SL | 1.43" | ✓ | 400 ft. | 1/2" | 3" | 65 lbs. | 10" | 33" x 29" x 16" |
| | WLR-3143-SL | 1.43" | ✓ | 300 ft. | 1/2" | 3" | 55 lbs. | 10" | 33" x 29" x 16" |
| | WLR-2143-SL | 1.43" | ✓ | 200 ft. | 1/2" | 3" | 45 lbs. | 10" | 33" x 29" x 16" |

| Mid | Catalog # | Camera Head | Self Levelling | Rod Length | Rod Size | Min. 90° Elbow | Weight | Max Pipe | Dimensions |
|-----|-------------|-------------|----------------|------------|----------|----------------|---------|----------|-----------------|
| | WMR-2168-SL | 1.68" | ✓ | 200 ft. | 1/2" | 3" | 42 lbs. | 12" | 29" x 18" x 15" |
| | WMR-2143-SL | 1.43" | ✓ | 200 ft. | 1/2" | 3" | 42 lbs. | 10" | 29" x 18" x 15" |
| | WMR-2123-SL | 1.23" | ✓ | 200 ft. | .400" | 2" | 42 lbs. | 6" | 29" x 18" x 15" |

| Mini | Catalog # | Camera Head | Self Levelling | Rod Length | Rod Size | Min. 90° Elbow | Weight | Max Pipe | Dimensions |
|------|-------------|-------------|----------------|------------|----------|----------------|---------|----------|-----------------|
| | WMN-2123-SL | 1.23" | ✓ | 200 ft. | 1/2" | 2" | 33 lbs. | 6" | 24" x 18" x 10" |
| | WMN-2100 | 1" | ✗ | 200 ft. | 3/8" | 1.5" | 33 lbs. | 4" | 24" x 18" x 10" |

*Straight View Cameras Available



HATHORN CAMERA REELS

MICRON



Get A Quote

PROUDLY DESIGNED AND MANUFACTURED IN NORTH AMERICA



100 ft of
Push Rod



512Hz High
Power Sonde



Works with 18V
Milwaukee® or
Equivalent
Batteries



Industry-Leading
Warranty

Standard Version

Wi-Fi Version



To be paired
with Hathorn
H12+ Controller



To be paired
with Phone or
Tablet

Micron camera reels can be used with either Hathorn® control modules (H12+ recommended), or with your own mobile Apple/Android device, should you opt for the Wi-Fi option. The Wi-Fi option is a standalone camera system that allows live streaming and recording to up to three devices at the same time using Hathorn's free app. It is powered by an external Milwaukee® 18V or equivalent battery (sold separately), which can last over 12 hours.

Micron reels are trusted by plumbers, general contractors, and home inspectors to deliver crystal clear, recordable video inspections of small pipes 1.5" to 3". These reels offer a butt-welded steel frame construction and 100 ft of premium 1/4" push rod. Both styles of reel come equipped with 1" straight view camera heads fitted with super bright, cool running LEDs for optimal picture quality.

These features give Micron reels the ultimate in portability. Designed and manufactured in North America, with a full one-year warranty.

HATHORN CAMERA REELS

MICRON

PROUDLY DESIGNED AND MANUFACTURED IN NORTH AMERICA

Standard Reel

Wi-Fi Reel



Micron Wi-Fi Specifications

Display

Size & Type Dependent upon Apple/Android device

Recording, Storage & Features

| | |
|-----------------|-----------------------------|
| Video Recording | MPEG4 |
| Screen Shot | JPEG |
| File Storage | Mobile device, cloud or USB |
| Footage Counter | Feet or meters, resettable |
| Sonde Frequency | 512Hz |
| Push Rod | HDPE - 100 ft. of 1/4" |
| Start Up Time | ~15 seconds |

Power

| | |
|---------------------|---------------------------------------|
| Battery (not incl.) | Only Milwaukee® M18 18V or equivalent |
| Battery Life | 12 hrs. using 3.0Ah (sonde off) |
| AC/DC Adapter | 12V - 4.1A (included) |
| Wi-Fi Frequency | IEEE802.11b/g/n |

Standard Micron Specifications

Display

Size & Type Compatible with All Hathorn control modules

Features

| | |
|----------------------------|---|
| Sonde Frequency | High power 512Hz or 640Hz (available only with H12+ controller) |
| Push Rod | HDPE - 100 ft. of 1/4" |
| Recording, Storage & Power | Please refer to H12+ specifications |

Weight & Dimensions

| | |
|------------------------|--------------------------------|
| Weight without Battery | 15lbs. (6.8Kg) without battery |
| Dimensions (L x W x H) | 16" x 12" x 10" |

Environmental

| | |
|-----------------------------------|-------------------------------|
| Water Resistance - Camera and Rod | IP67 to 60psi |
| Water Resistance - Battery Cradle | IP66 |
| Water Resistance - Reel Hub | IP66 |
| Operating Temperature Storage | 14°F to 122°F (-10°C to 50°C) |
| Temperature | -4°F to 140°F (-20°C to 60°C) |

| Micron Catalog # | Camera Head | Wi-Fi | Self Levelling | Rod Length | Rod Size | Max Pipe | Min. 90° Elbow | Weight | Dimensions |
|------------------|-------------|-------|----------------|------------|----------|----------|----------------|---------|-----------------|
| MC-1100 | 1" | ✗ | ✗ | 100 ft. | 1/4" | 3" | 1.5" | 15 lbs. | 16" x 12" x 10" |
| MC-1078 | 7/8" | ✗ | ✗ | 100 ft. | 1/4" | 3" | 1.5" | 15 lbs. | 16" x 12" x 10" |
| WMC-1100 | 1" | ✓ | ✗ | 100 ft. | 1/4" | 3" | 1.5" | 16 lbs. | 16" x 12" x 10" |
| WMC-1078 | 7/8" | ✓ | ✗ | 100 ft. | 1/4" | 3" | 1.5" | 16 lbs. | 16" x 12" x 10" |



North America 1-866-HATHORN

International 1-905-604-7040

hathorncorp.com | sales@hathorncorp.com

HATHORN LOCATOR

UTILI-TRACK



Get A Quote

PROUDLY DESIGNED AND MANUFACTURED IN NORTH AMERICA



Multi-frequency
locator including
512Hz Sonde



Light Weight
4.2 lbs/1.9 kg



Comes with 6
C-cell batteries



Industry-Leading
Warranty

Made in the USA, the Hathorn® Utili-Track sonde and cable locator allows users to adapt the locator to their specific needs. The Utili-Track offers best-in-class 512Hz sonde and line trace locating indicating direction of the sonde and it's depth. Ergonomically designed and balanced, it provides depth reading of up to 25 feet and current measurement to help identify target utilities and sondes in crowded areas.

A large, high-contrast LCD offers a visible signal response. Automatic depth, automatic current, and proximal directional arrows are readable in the brightest sunshine or backlit for viewing in dimmer conditions.

The Utili-Track can locate multiple active frequencies with a minimum of interference while maintaining the ability to continue locating past faults and around conduit bends. Passive frequencies identify "live" and charged lines by their naturally occurring electromagnetic fields. The Utili-Track offers multiple passive frequencies -- 50Hz, 60Hz, Radio Frequency, Cathodic Protection Rectifier & CATV -- allowing line locating without the use of a transmitter.

HATHORN LOCATOR

UTILI-TRACE



Get A Quote

PROUDLY DESIGNED AND MANUFACTURED IN NORTH AMERICA



Operates on low, medium and high frequency ranges



Light Weight
2.2 lbs/1 kg



Comes with 8 C-cell batteries



Multi- frequency



Industry-Leading Warranty

Made in the USA, the Hathorn® Utili-Trace transmitter offers multi-frequency coupled induction ranging from 8 kHz to 118 kHz including the traditional 512Hz frequency, and automatic impedance matching for direct connections. This 3-watt transmitter has the ability to simultaneously apply two frequencies to a utility.

From one transmitter setting, the user can locate the main line as well as other services by "lighting up" the entire site. This set-and-forget feature saves you time and money by reducing the need to repeatedly relocate the transmitter. All functions are accessed via weather-proof membrane buttons and both user input and transmitter status are verified with audible responses.



PATCH CABLES

Hathorn manufactures its connection cables to ensure a reliable signal between camera reel and monitor for the life of the product.



Part Number: **PC-CR12**

Patch Cable Connecting
12 Pin Reel to 12 Pin
Controller
(Current Models)



Part Number: **PC-C12R10**

Patch Cable Connecting 12
Pin Controller to 10 Pin
Reel



Part Number: **PC-C10R12**

Patch Cable Connecting 10
Pin Controller to 12 Pin
Reel



Part Number: **PC-CR12G**

Patch Cable for Keyhole
Gas Camera System



Part Number: **PC-CR10**

Patch Cable Connecting 10
Pin Reel to 10 Pin
Controller

ACCESSORIES

Controller mounts, power supplies, camera head skids and brake handles - Hathorn carries all the accessories you need to upgrade and maintain your camera system.



Part Number: **PS-12V**

12V Power Supply



Part Number: **10140**

Mounting bracket complete with Pin & Shaft for large and extra large reels



Part Number: **90204**

Pin for reel mounting bracket



Part Number: **10128**

Shaft for controller mounting bracket



Part Number: **10119**

Small brake handle for mini/mid reels



Part Number: **10140**

Large brake handle for standard reel



Part Number: **WHEEL6**

6" X 1 1/2" wheel for H2 and H7



Part Number: **WHEEL8**

8" x 1 3/4" wheel



Part Number: **10121**

Rubber foot for reel



Part Number: **WHEEL7**

7" wheel in black

CAMERA HEAD SKIDS

Skids are available for all Hathorn Camera heads. Skids are used to protect your camera head from damage and also to raise the head out of standing water and center the camera in the pipe. It is recommended that users always use a skid on their camera heads so as to protect their investment.



Part Number: **SK-168SLSV**

P-Trap Skid for 1.68"
Camera Heads



Part Number: **SK-143SL**

P-Trap Skid for 1.43"
Self Leveling Camera Head



Part Number: **SK-168GR**

3" Grooved Skid for 1.68"
Camera Heads



Part Number: **SK-1.43GR**

3" Grooved Skid for 1.43"
Camera Heads



Part Number: **SK-143SV**

P-Trap Skid for 1.43"
Straight View Camera Head



Part Number: **SK-123SV**

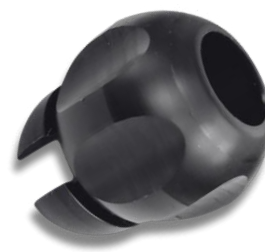
P-Trap Skid for 1.23"
Straight View Camera Head

CAMERA HEAD SKIDS



Part Number: **SK-123SL**

P-Trap Skid for 1.23" Mini
Self-Leveling Camera Head



Part Number:

Grooved Skid for Micron 1"
Camera Head **SK-1GR**



Part Number: **SK-123TOW**

Tow Skid for 1.23" Camera Head



Part Number: **SK-RSL**

Universal Roller Skid for
1.68" or 1.43" Camera
Head for 6" - 14" Pipes



Part Number: **SK-RSMN**

Mini Roller Skid for 1.23"
Camera Head for 4" - 6"
Pipes

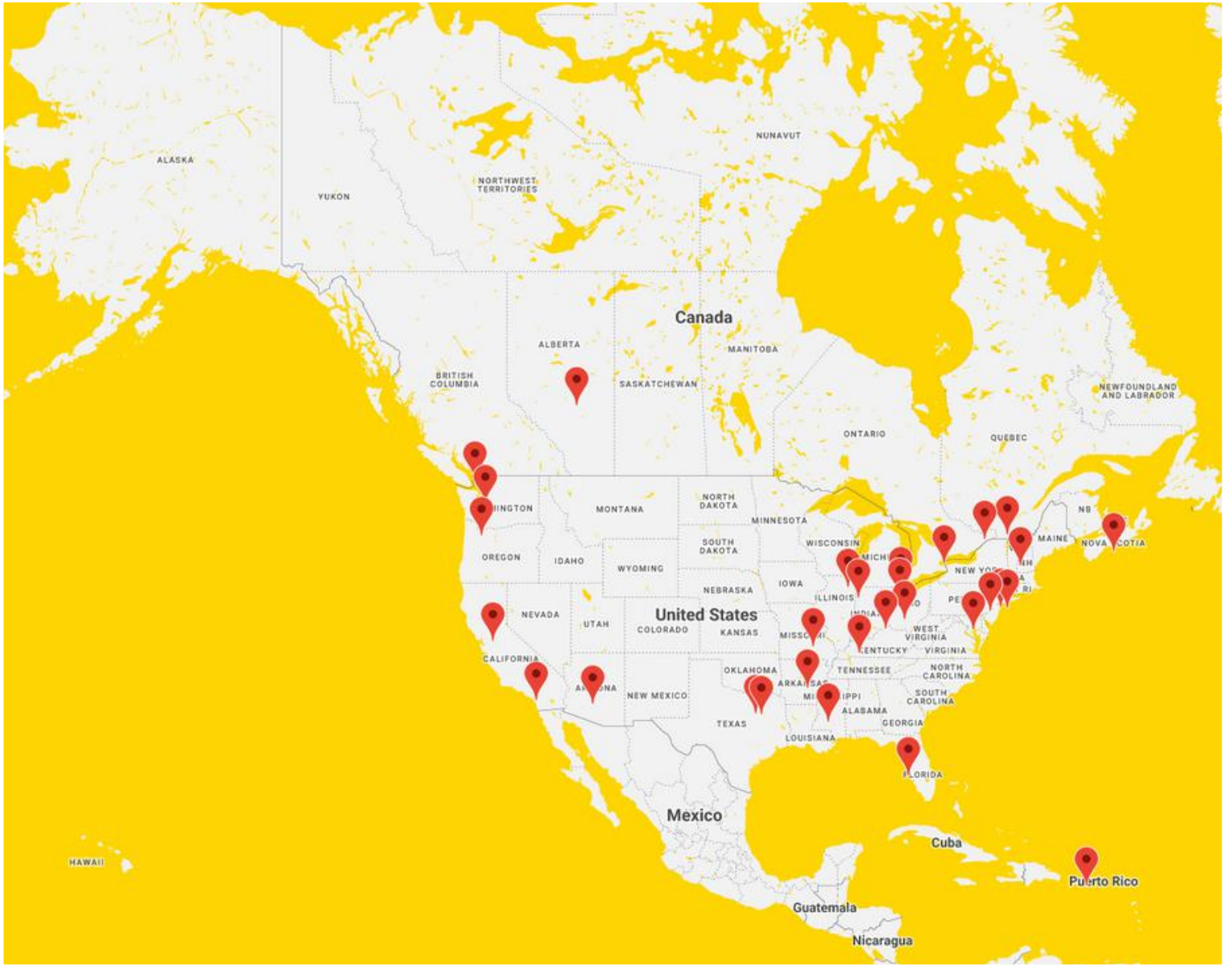
CAMERA HEADS

Hathorn offers a full line of replacement camera heads to repair or upgrade your Hathorn system.

| PART NUMBER | DESCRIPTION | PRODUCT IMAGE |
|---------------------|---|---|
| CH-168SV | 1.68" Straight View Camera Head - Stainless Steel |  |
| CH-168SL | 1.68" Self-Leveling Camera Head - Stainless Steel |  |
| CH-168SL(AL) | 1.68" Self-Levelling Camera Head - Aluminum |  |
| CH-143SV | 1.43" Straight View Camera Head - Stainless Steel |  |

CAMERA HEADS

| PART NUMBER | DESCRIPTION | PRODUCT IMAGE |
|-----------------|---|---|
| CH-143SL | 1.43" Self-Leveling Camera Head - Stainless Steel |  |
| CH-123SV | 1.23" Straight View Camera Head - Stainless Steel |  |
| CH-123SL | 1.23" Self-Leveling Camera Head - Stainless Steel |  |
| CH-1SV | 1" Straight View Camera Head - Stainless Steel |  |

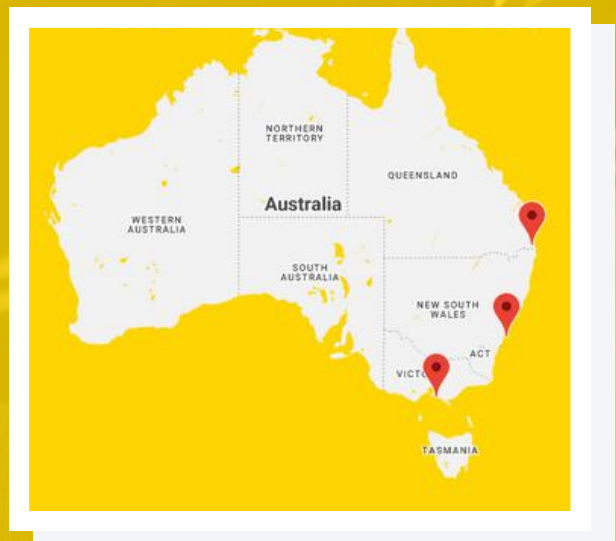


REPAIR CENTRES

If you need us, we're always close! We have a network of Authorized Service and Repair Dealers throughout the United States, Canada and Australia. Contact them for plumbing and drains camera service or repair.

To get more specific location information, please visit

www.hathorncorp.com/repaircentres





HATHORN CORP. CANADA
480 HOOD ROAD, UNIT 5
MARKHAM, ONTARIO
L3R 9Z3 CANADA

HATHORN USA
739 NORTH WILSON ROAD
COLUMBUS, OHIO
43204 USA



PHONE
1 (866) HATHORN



EMAIL
sales@hathorncorp.com



**FIND YOUR LOCAL
DEALER**



**LEAVE US A
REVIEW**





HATHORN

INSPECTION CAMERAS

Social Media Links



HATHORN CORPORATION
480 HOOD ROAD, UNIT 5
MARKHAM, ONTARIO
L3R 9Z3 CANADA
HATHORNCORP.COM
1 (866) 428-4676



HATHORN USA
739 NORTH WILSON ROAD
COLUMBUS, OHIO
43204 USA
HATHORNCORP.COM
1 (866) 428-4676