

trio-vision-ary
cctv inspection technology

**TrioVision**
TECHNOLOGIES



Forward-thinking, quality-built video inspection solutions to meet the needs of all budget types and application requirements

trio-vision.com



Introducing the pioneering line of advanced CCTV inspection equipment from Trio-Vision: richly featured, flexibly functional machines and accessories for those whose underground infrastructure inspection needs are more demanding. These products offer a variety of options and accessories, ideal for a wide array of environments such as wastewater collection systems, stormwater and drainage structures, and industrial applications.

Paired with our easy-to-use, PACP certified AssetDMS touchscreen technology data collection software, you'll always have the right system to go where you need to do the job your customers and communities expect, while maximizing productivity and profits.

The Trio-Vision Story

Founded in 2006, Trio-Vision began life overseas, specializing in the development, manufacturing, sales and service of underground pipe inspection technology. Trio-Vision holds numerous patents and copyrights on its innovative designs for equipment and related software. In 2016, we acquired Cobra Technologies and joined our American partner in offering the market a broader range of options to meet its individual needs.

Today, our company continues a history of innovative design and quality construction of multiple product lines for the underground infrastructure video inspection industry. We take great pride in providing after-sales customer service whose quality matches that of our products.



TVT-150 Pipe Inspection System

This robust, Windows®-based system performs complete CCTV pipe inspections, recording pipeline defects and synchronously transmitting video to the control unit. Our daylight-readable touch-screen monitor, along with our portable control unit, processes and saves videos in the field.



Standard Configuration

- ◇ TVT-150 steerable crawler 6-12"
- ◇ IP68 rating
- ◇ Pan-Tilt-Zoom camera
- ◇ Portable control unit
- ◇ Full power cable reel with 1000 ft of cable
- ◇ Back-up camera and light
- ◇ Inclinometer
- ◇ Monitored internal pressure
- ◇ Axis alert system
- ◇ Laser measurement model

Options

- ◇ Axial camera
- ◇ Android® app for remote operation
- ◇ Manual cable reel
- ◇ Manual Gentry
- ◇ WiFi controls

TVT-300 Pipe Inspection System

Using the same robust control unit as the TVT-150 system, this steerable crawler operates in pipes from 12-60" in diameter.

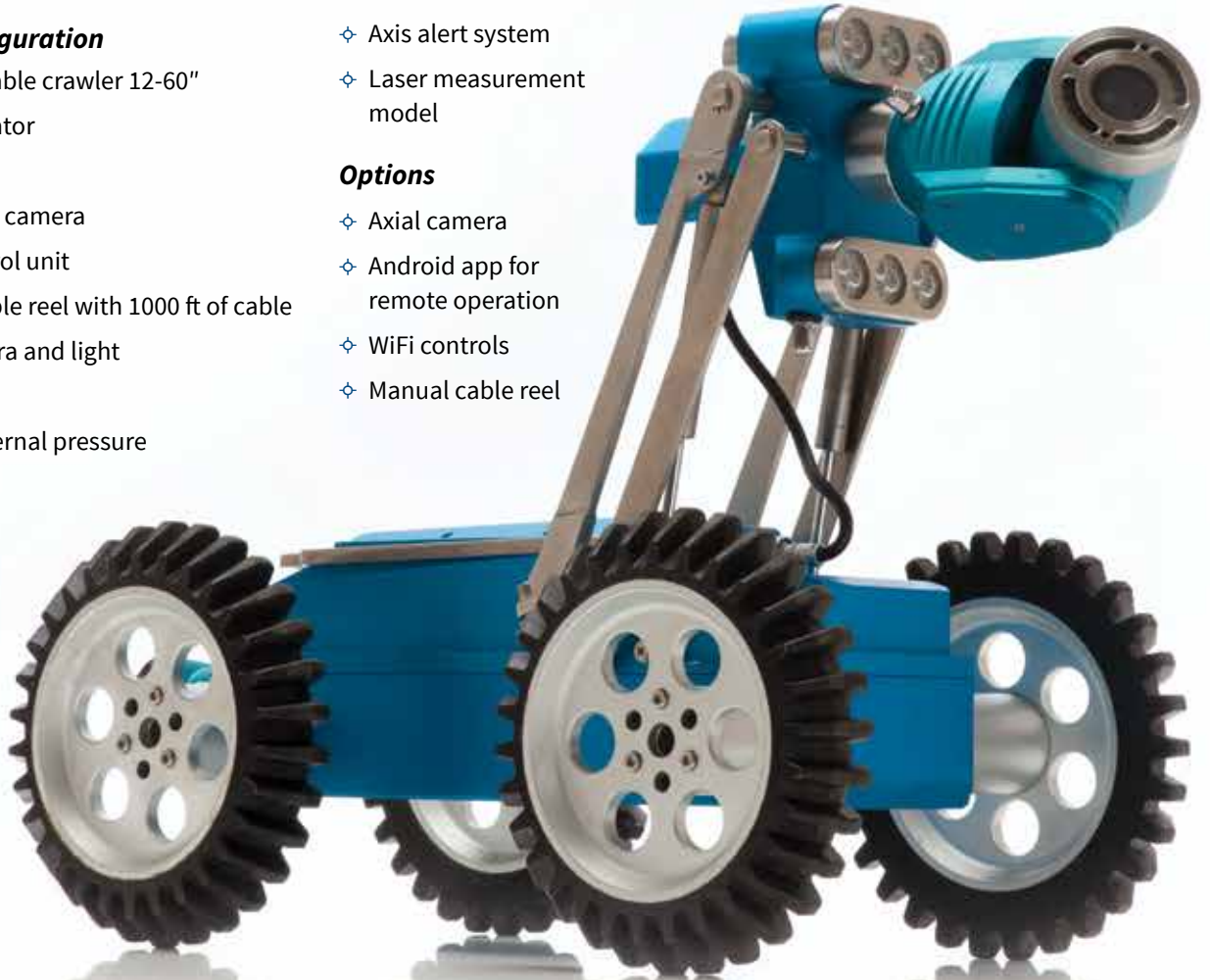
Standard Configuration

- ❖ TVT-300 steerable crawler 12-60"
- ❖ Powered elevator
- ❖ IP68 rating
- ❖ Pan-Tilt-Zoom camera
- ❖ Portable control unit
- ❖ Full power cable reel with 1000 ft of cable
- ❖ Back up camera and light
- ❖ Inclinator
- ❖ Monitored internal pressure

- ❖ Axis alert system
- ❖ Laser measurement model

Options

- ❖ Axial camera
- ❖ Android app for remote operation
- ❖ WiFi controls
- ❖ Manual cable reel



TVT-6000 Sonar Inspection System

Detects and pinpoints targets underwater through sonar wave reflection, so it can perform even in a pipeline filled with liquid, to determine pipe conditions including cracks, root intrusion and debris levels. The TVT-6000 is our most advanced device for pipeline inspection and assessment, providing a complete 360° continuous scan within one second, while its built-in roll and pitch angle sensors keep the image under control.

Standard Configuration

- ❖ Sonar probe
- ❖ Control unit
- ❖ Sonar float
- ❖ Manual cable drum
- ❖ PipePro software

Optional Configuration

- ❖ Special battery
- ❖ SonarPro 3D





Simple. Powerful. Robust.

We developed our data collection process specifically to enable the user in the field to collect data without having to manage multiple screens and complex database software programs. A simple touchscreen interface makes the use of AssetDMS more second nature than work.

- ❖ Compatible with a wide range of manufacturers' CCTV systems
- ❖ PACP/LACP/MACP certified by NASSCO
- ❖ Import/Export from ANY certified PACP/LACP/MACP database
- ❖ Compatible with Microsoft Windows® 7 Pro operating system
- ❖ Intuitive design and self-guiding prompts
- ❖ No need to remember any PACP/LACP/MACP codes
- ❖ NASSCO Conditions photos provided for reference
- ❖ Designed to minimize data entry in the field and improve accuracy

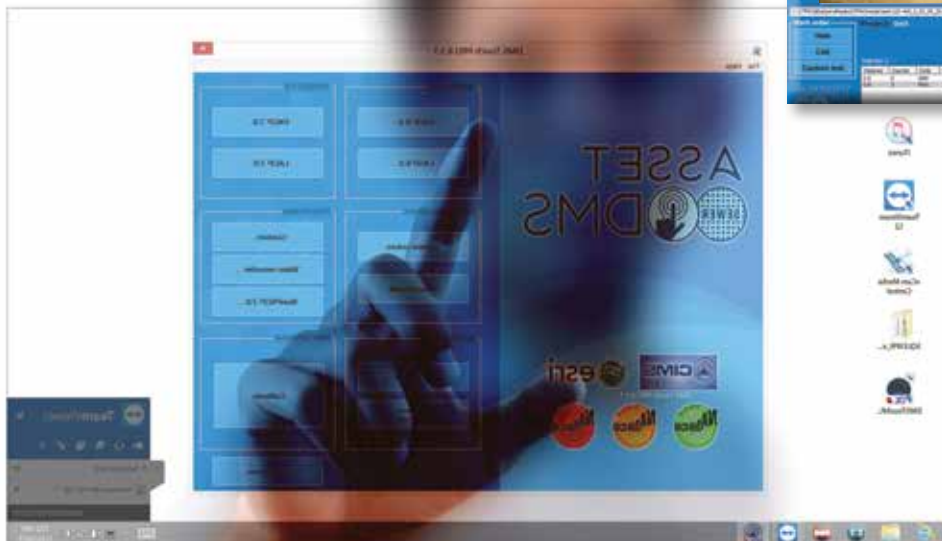
Powerful, Industry-Leading Analysis Capabilities

Data without analysis is just numbers. At AssetDMS, we've built in powerful analytical capabilities, allowing the user to filter and cross-reference the data extensively by date/condition/geography/codes and a whole lot more, to drive informed and accurate decision-making.

Built-in data verification and validation assures accurate and complete data entry saving time and money.



Video Recording Screen



PACP Reference Photos for Defect Codes



for more details visit www.trio-vision.com or www.assetdms.com

Xplorer FreeHD (FULL HD 1920 x 1080)

This one breaks the rules! The Xplorer FreeHD is a wireless high definition (FullHD 1920 x 1080) lightweight, portable video inspection system that can be operated by one person. The system is capable of capturing stunning 1080P video and photos that your clients will appreciate and your community deserves. The control unit utilized is based upon user preference and can be an off-the-shelf Windows® 10 Pro tablet PC, convertible laptop or standard laptop.

The Xplorer FreeHD can be paired with AssetDMS Inspection Software installed on the Windows® 10 Pro device to deliver reports and exports, making integration to asset management software easier than ever.

Standard Configuration

- ✦ Camera head
- ✦ Lithium Ion battery
- ✦ Telescopic pole
- ✦ Laser distance measuring module

Options

- ✦ Choice of Windows® based data capture device i.e. tablet or laptop

Camera and Tractor Accessories

We offer an array of accessories to extend the functionality and potential applications of our TrioVision Technologies product line, including an array of:

- ✦ Cables
- ✦ Poles & Access tools
- ✦ Floats
- ✦ Controllers
- ✦ Batteries
- ✦ Cable drums
- ✦ Specialty wheels
- ✦ Generators
- ✦ Storage & Carrying cases
- ✦ Enhanced lighting



After-sales support and service

Call toll-free or email to reach our experienced, dedicated customer service staff, who are here to help you with:

- ✦ Technical support for equipment or software
- ✦ Replacement parts
- ✦ Service & repair
- ✦ Product manuals
- ✦ Warranty information
- ✦ Loaner units while yours are being serviced or repaired

trio-vision

4806 Wright Drive, Bldg C, Smyrna GA 30082
p: 800.443.3761 | 770.435.8991
f: 770.435.0402 • sales@trio-vision.com
www.trio-vision.com